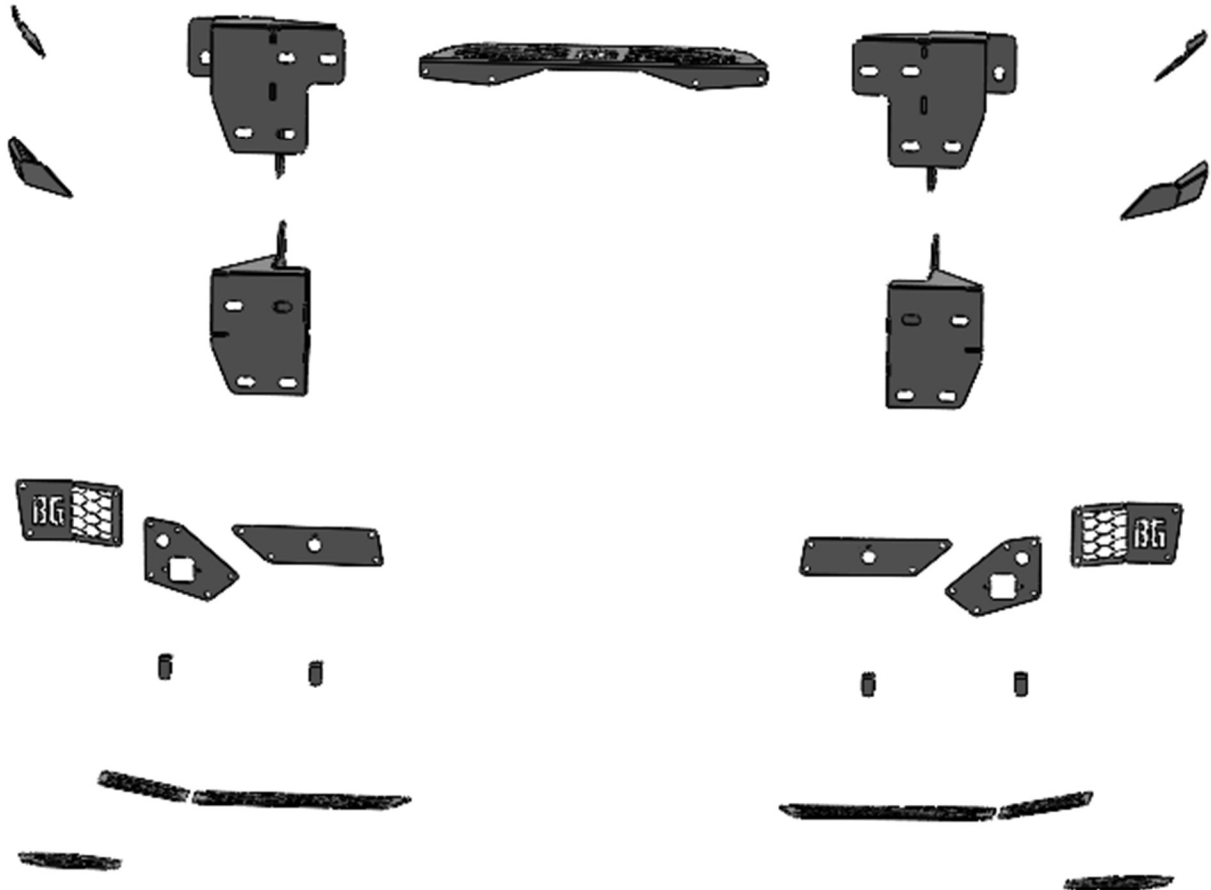
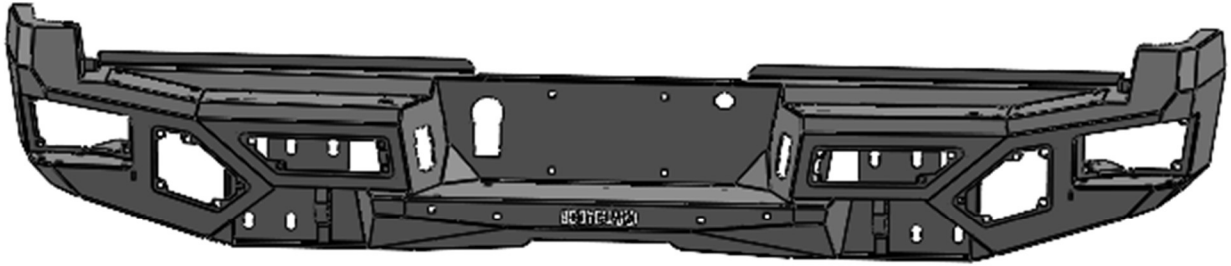
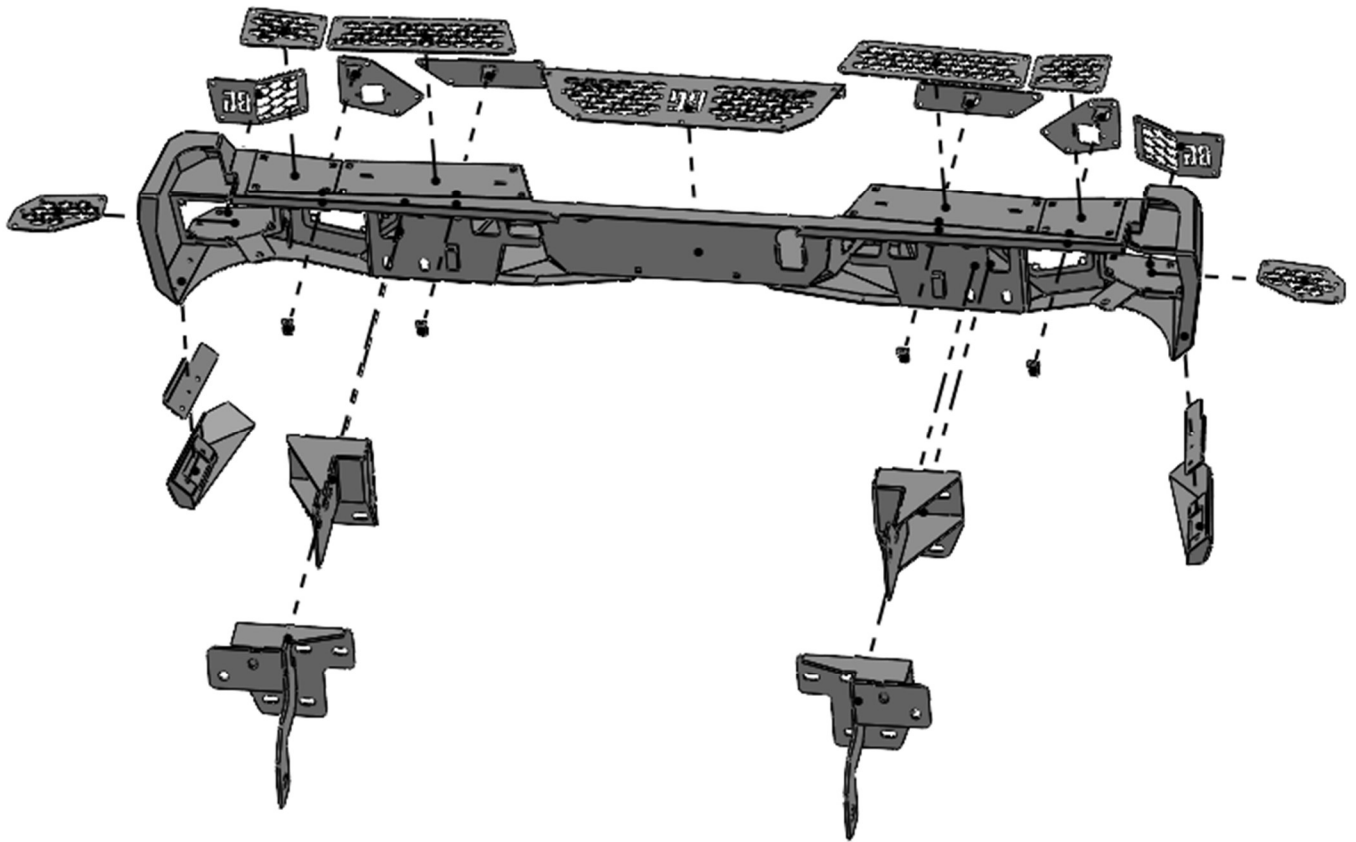


INSTALLATION GUIDE

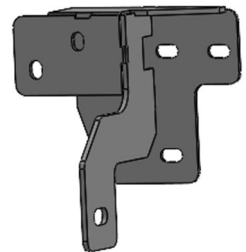
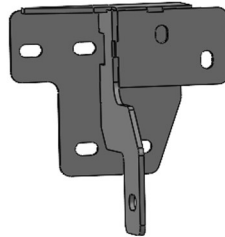
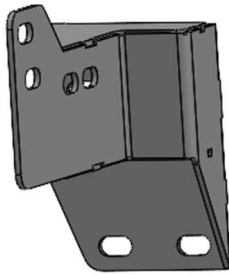
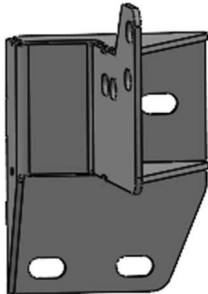
PARTS



EXPLODED VIEW



EXPLODED VIEW 2

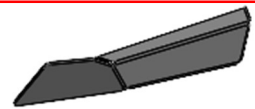
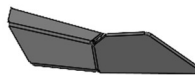
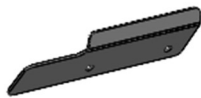
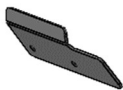


**Driver Truck Mount
2017-2022**

**Passenger Truck Mount
2017-2022**

**Driver Truck Mount
2023-2024**

**Passenger Truck Mount
2023-2024**

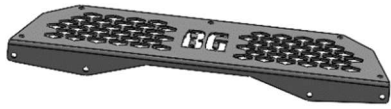


**Driver Endcap Plate
2017-2022**

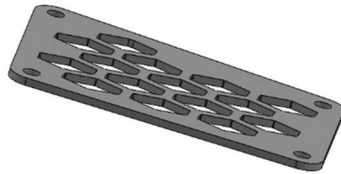
**Passenger Endcap Plate
2017-2022**

**Driver Endcap Plate
2023-2024**

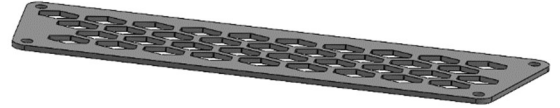
**Passenger Endcap Plate
2023-2024**



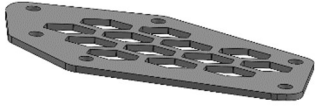
Center Step Plate



Top Outside Step Plate x 2



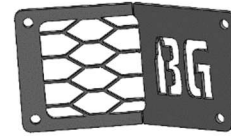
Top Inside Step Plate x 2



Corner Step Plate x 2



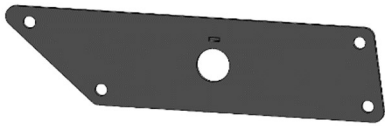
Driver-side Step Back



Passenger-side Step Back

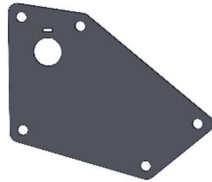


Outside Sensor and Light Plate x2



Inside Sensor Plate x2

OTHER OPTIONS



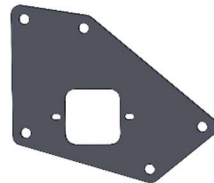
Sensors no lights



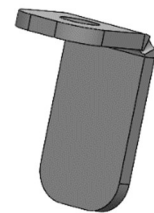
No sensors



No sensors or Lights



Lights no sensors



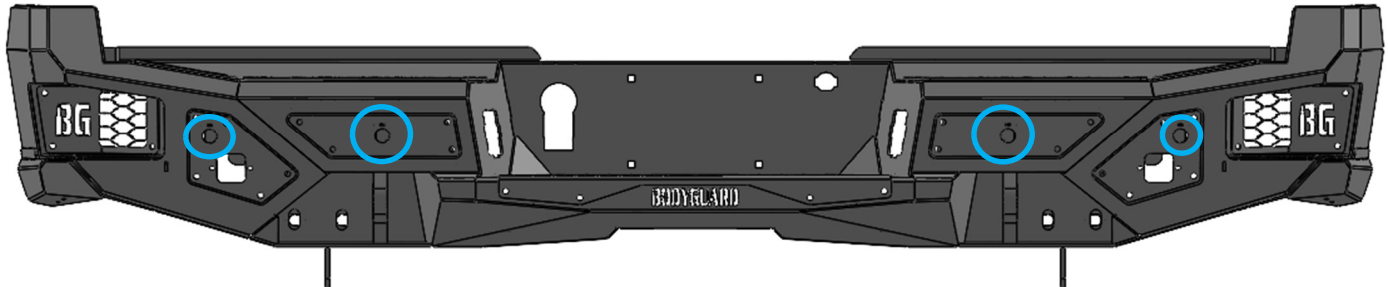
Sensor Tabs x4

HARDWARE

<u>License Plate</u>	<u>Qty</u>
Plastic License Plate Nuts	4
#14 x 5/8" Zinc License Plate Screw	4
<u>Bolt-in Step Pad and Light/Sensor Plates</u>	<u>Qty</u>
1/4-20 x 5/8 Long, Stainless Steel SBHCS	63
1/4-20 (.093-.126: Panel Range) Zinc Electroplate Spring Steel Cage Nut	63
<u>Parking Sensor Brackets</u>	<u>Qty</u>
1/4-20 x 5/8 Long, Stainless Steel SBHCS	4
1/4-20 Hex Grade 5 Serrated Flange Nut, Stainless Steel	4
<u>Truck and Bumper Mounts</u>	<u>Qty</u>
1/2-13 x 1-1/2 Long, Grade 8 HB Zinc-Yellow	10
1/2" Washer, Grade 8 Zinc-Yellow	16
1/2"-13 Grade 8 Steel Serrated Flange Nut Zinc	12
1/2"-13 x 1-1/4" BLACK Hex Bolt	4
1/2" BLACK Flat Washer	8

PARKING SENSOR INSTALL (OPTIONAL)

1. If your vehicle is equipped with parking sensors install in the four points indicated below. Ensure that sensors are placed in their original locations based on OEM installation



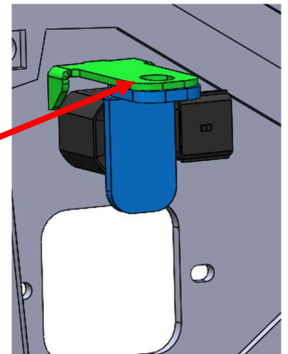
1. Next, install the sensor tab over the sensor as shown. Slide the sensor and sensor tab into position and tighten down with a 1/4"-20 x 5/8" BHCS screw. Plug the parking sensors into the harness and let the center mesh and fog light trim rings loosely hang down.



1x - 1/4-20 x 5/8 Long, Stainless Steel SBHCS

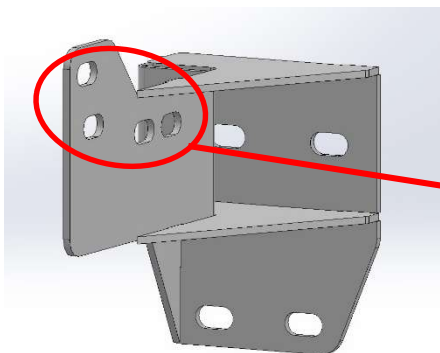


1x - 1/4-20 Hex Grade 5 Serrated Flange Nut, Stainless Steel



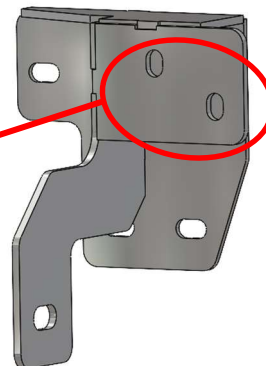
MOUNT INSTALL

1. Use the factory flag bolts and nut hardware to install the Bodyguard bumper mounts onto the frame loosely.



2017-2022

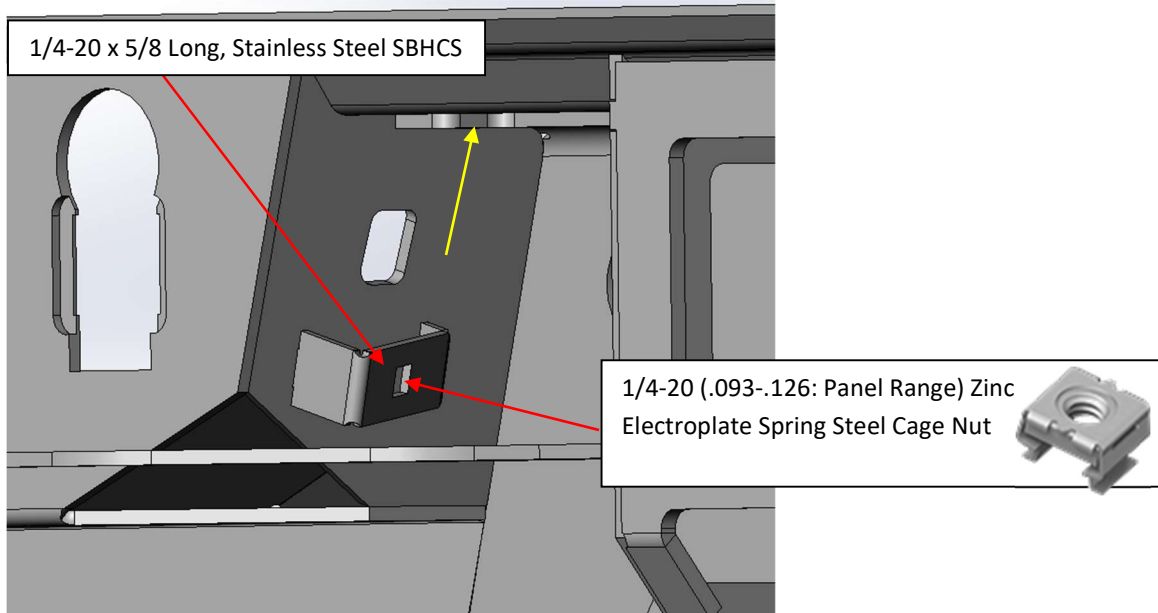
Factory hardware



2023

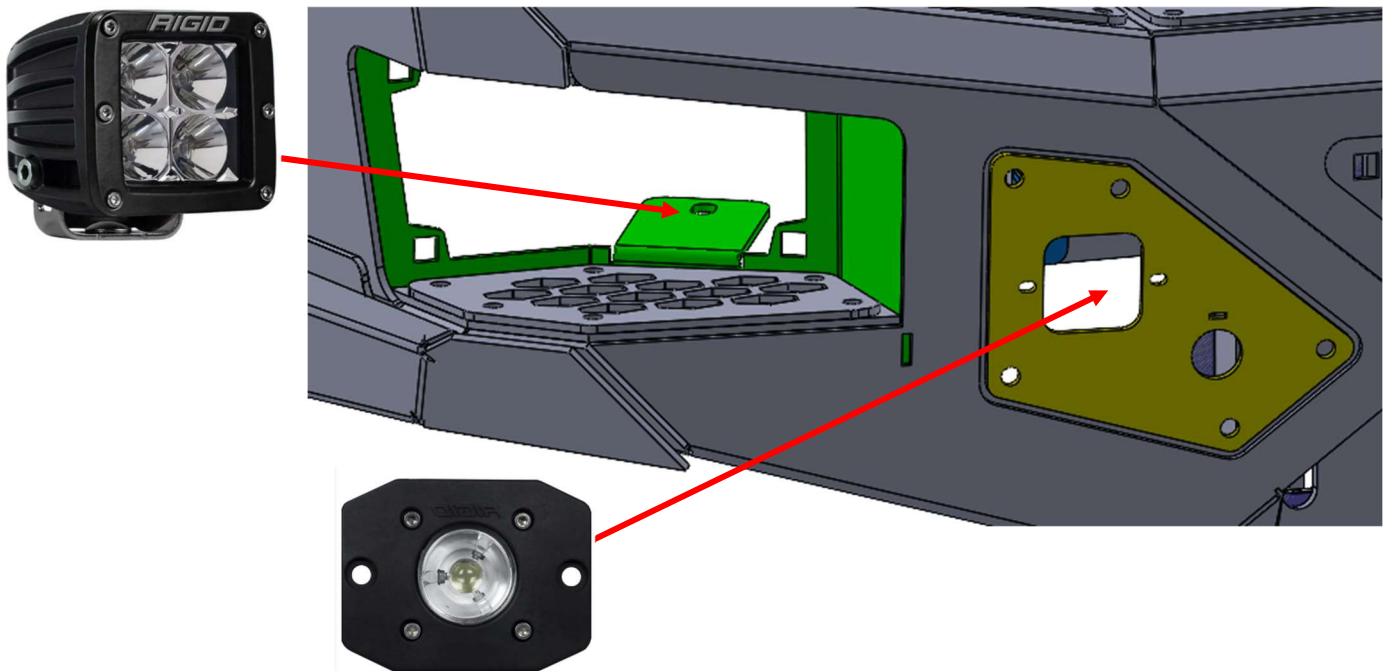
TAG LIGHT INSTALL

1. You will install the cage nut and secure the license plate light to the bumper using 1x 1/4-20x5/8 long stainless-steel bolt. The tag light will slide into a slot cutout on the top of the bumper shown by the yellow line



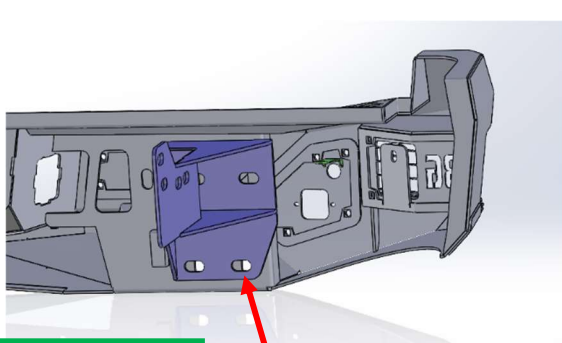
LED LIGHT INSTALL

1. The bolt-on outside sensor plate accepts Rigid Ignite Series flush mount backup lights.
2. The tab behind the corner step back plate works with Rigid D-Series surface mount lights.

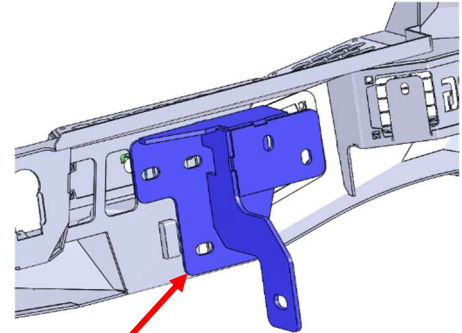


BUMPER INSTALL

1. Attach the bumper to the mounts with the 1/2"-13 x 1-1/2" Black Hex Bolt hardware, leaving enough space to adjust the bumper as needed into position. Using a tape measure, adjust the bumper vertically and horizontally to the desired body gaps. Once the bumper is lined up, tighten all hardware for the bumper and the mounts. Using jack stands or an additional person to help support the bumper is recommended



2017-2022

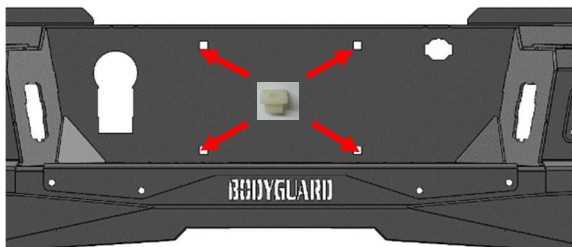


2023+

1/2"-13 x 1-1/2" Stainless Steel Hex Bolt (4x per side)

LICENSE PLATE INSTALL

1. Insert Plastic License Plate Nuts into bumper and mount license plate using the License Plate Screw and a power drill.

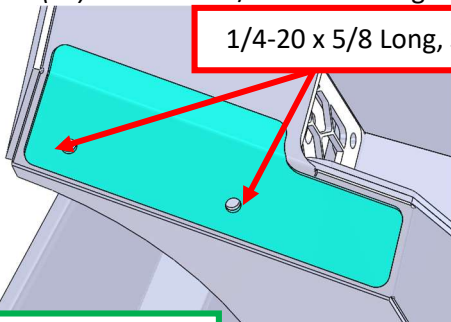


END CAP PLATE INSTALL

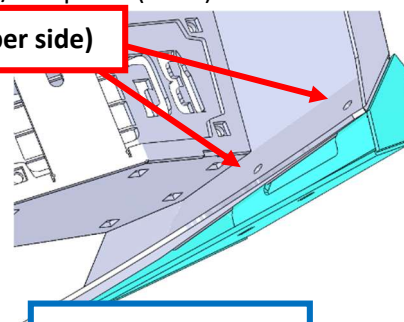
1. Install the end cap plates in their correct position (*driver/passenger*) using the 1/4-20 x 5/8 Long, Stainless Steel (4x) and either 1/4-20 Hex Flange Nut x4 (17-22) or 1/4 Clip Nut (2023).



1/4-20 x 5/8 Long, Stainless Steel (2 per side)



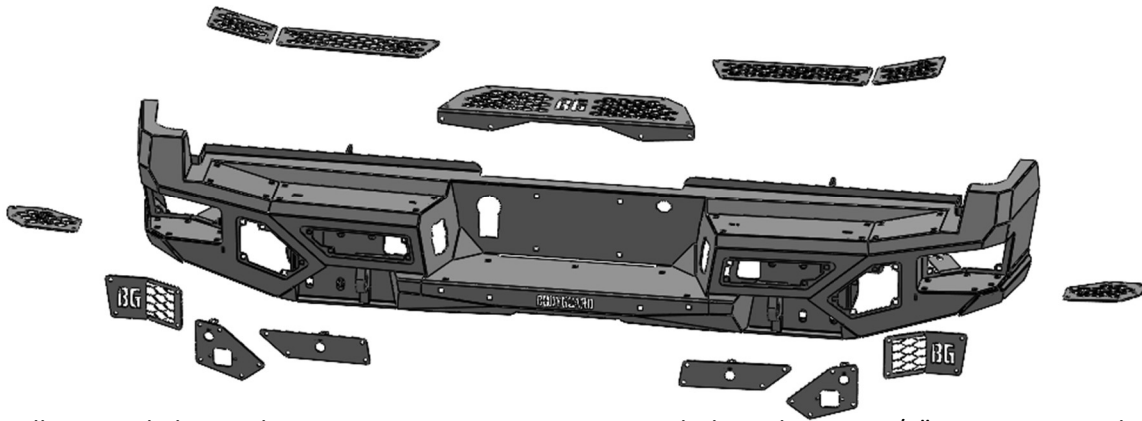
2017-2022



2023



STEP PADS AND PLATE INSTALL



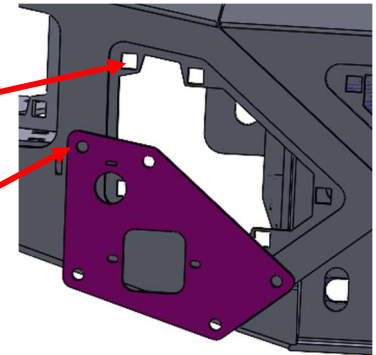
1. For all pictured plates, place cage nuts into square receiver holes. Then use 1/4" screws to attach plates to bumper.



1/4-20 (.093-.126: Panel Range) Zinc Electroplate Spring Steel Cage Nut



1/4-20 x 5/8 Long, Stainless Steel SBHCS



SAFETY

THE SAFETY OF YOU AND OTHERS IS VERY IMPORTANT TO US!

To minimize this risk and make an informed decision about safety, it is important that you carefully read and follow the installation instructions we have provided.

We urge you to use your own good judgment and allow plenty of time for installation.

HAZARD CHECKLIST

1. Always wear personal protective equipment (PPE) such as: protective eye wear, gloves, close toed shoes, etc.
2. We recommend that you use a certified mechanic or shop for professional installation.
3. Always set emergency brakes on vehicle and use tire blocks to ensure vehicle stabilization.
4. Use caution when lifting, we recommend the use of equipment to help lift bumpers into place.
5. Use caution when using power tools such as air ratchet, etc.
6. Take caution when installing wiring.
7. Perform regular inspections of hardware, bolts, brackets, etc.
8. Rigid light brackets are specifically designed to fit Rigid lights, we do not guarantee off brand fitment.
9. Our winch mount is designed for Warn and Superwinch products. We do not guarantee off-brand fitment.

USE & RISK

Bodyguard Products LLC is not responsible for damage to our products, or other subsequent damage that might occur because of misuse or improper installation. While we do manufacture products that appear stronger than factory parts, our products should not be viewed or relied upon as life-saving devices in the event of a collision or rollover. We make no claims relating to airbag compatibility, crashworthiness, or sturdiness. It is the customer's responsibility to check with the vehicle manufacturer or auto dealer regarding airbag compatibility and automobile manufacturer's warranty before installing our products.

FINISHING UP

- Install shackles.
- Confirm that all hardware is tightened, and everything is secure.
- Secure wiring harnesses for lights and sensors.
- Test all lighting and wiring before using vehicle (fog lights, sensors, etc.).
- Periodically check that all hardware is tightened and that all wiring and connections are secure.
- Periodically check that all sensor plugs are secure.
- Routinely wash bumper to maintain the powder coat finish.

FEEDBACK

We'd love to hear from you!

Please send your pictures, testimonials, comments, or suggestions to us by email at info@bodyguardbumpers.com. We frequently use customer pictures for brochures and marketing materials, and we always welcome customer feedback to ensure quality improvements within our company. Thanks for your purchase; we appreciate your business very much!

Where **STRENGTH** Meets *Style!*™



@BodyguardBumpers